



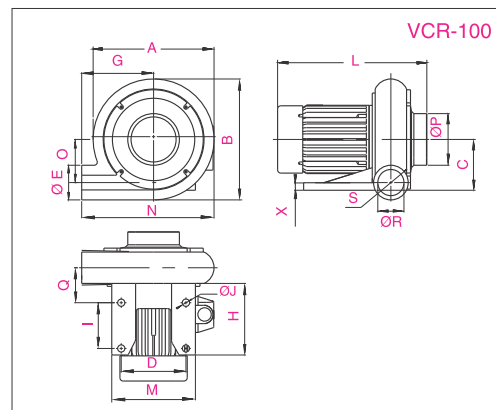
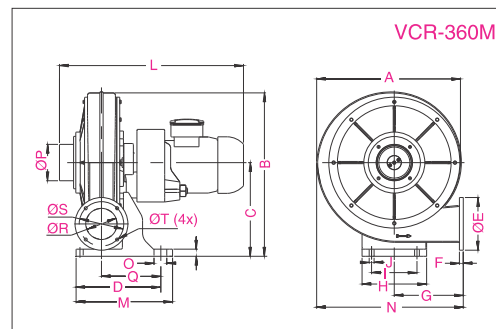
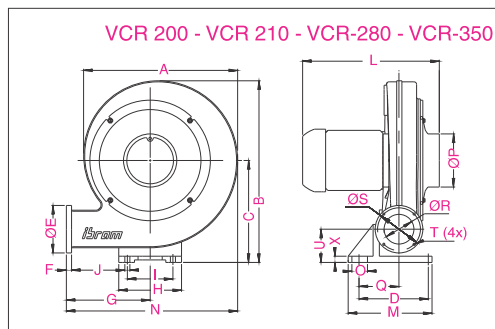
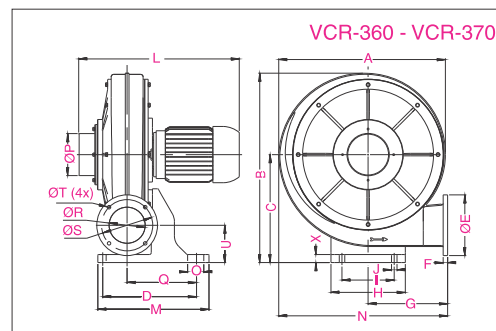
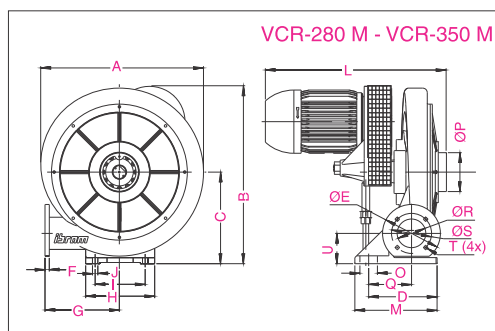
# VENTILADOR CENTRÍFUGO VCR

CENTRIFUGAL FAN - VENTILADOR CENTRÍFUGO

PÁ RETA

STRAIGHT-BLADE

PALA RECTA



- ✓ Carcaça em alumínio
- ✓ Motor trifásico 4 tensões, IP-55; exceto VCR-200 (IP-54)
- ✓ Isolamento classe F
- ✓ Acessórios: bocal de saída e supressor de ruído
- ✓ Sob consulta: motor monofásico; motor à prova de explosão e outras tensões

- ✓ Aluminum frame
- ✓ Electric three-phase 4 voltage motors, IP-55, except for VCR200 (IP-54)
- ✓ Class F insulation
- ✓ Accessories: outlet nozzle and noise suppressor
- ✓ Under request: mono-phase electric motors, explosion proof, and other voltages

- ✓ Carcasa de aluminio
- ✓ Motor trifásico 4 tensiones, IP-55; además de VCR-200 (IP-54)
- ✓ Aislamiento clase F
- ✓ Accesorios: boquilla de salida y supresor de ruido
- ✓ Sob consulta: motor monofásico; motor a prueba de explosión y otras tensiones

DIMENSÕES (mm) DIMENSIONS (mm) DIMENSIONES (mm)

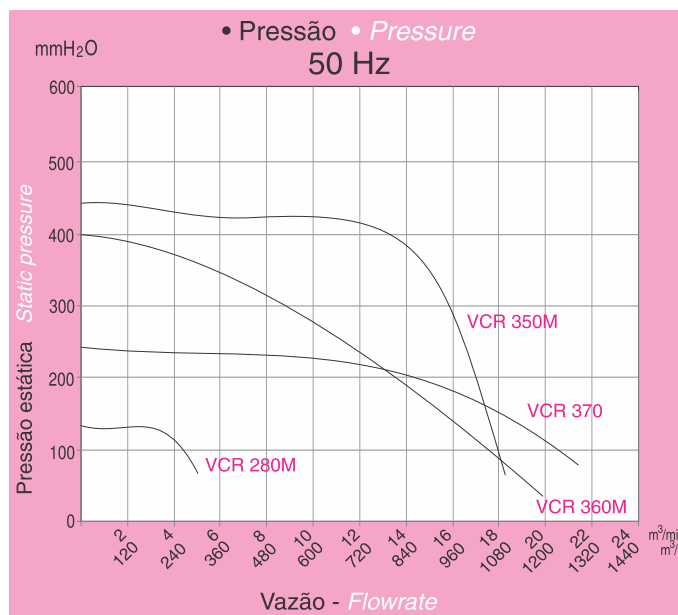
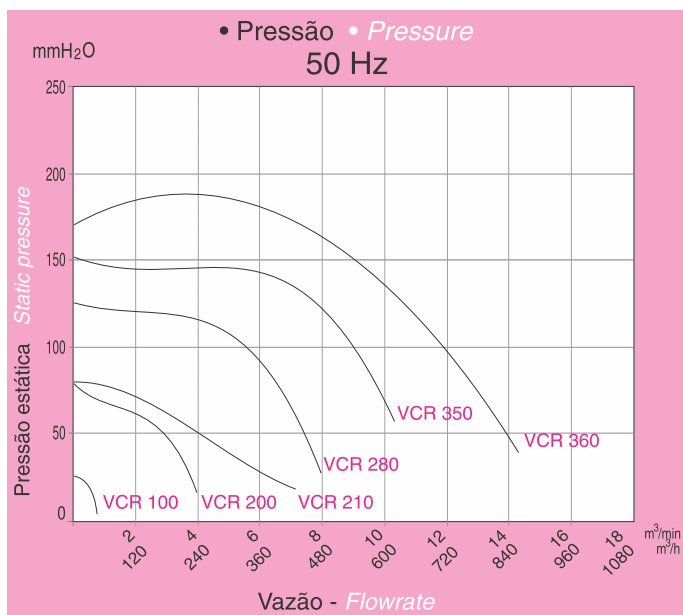
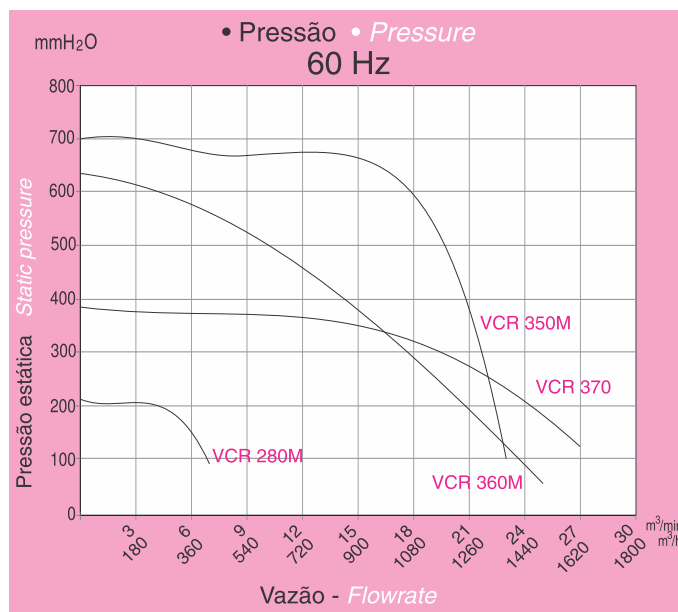
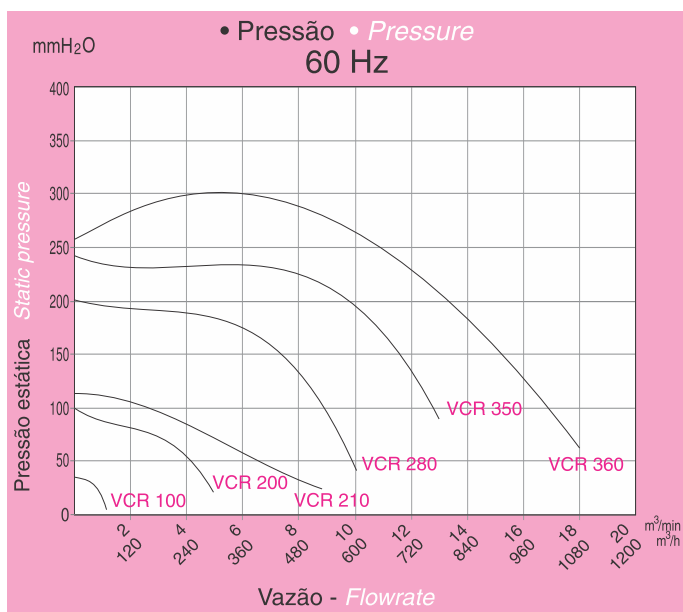
MODELO	A	B	C	D	ØE	F	G	H	I	ØJ	L	M	N	O	ØP	Q	ØR	ØS	ØT	U	X
VCR-100	185	185	78	99	53	-	110	108	70	10	228	128	203	66	79	53	40	53	-	-	11
VCR-200	293	340	193	120	92	10	160	120	87	10	260	160	317	30	102	70	57	82	M5	60	12
VCR-210	300	344	194	144	100	9	150	120	94	8	278	175	311	30	149	117	61	89	5	62	17
VCR-280	360	415	234	152	120	12	170	152	115	10	343	190	365	-	87	93	66	100	M8	72	14
VCR-350	455	491	265	167	165	12	200	193	140	15	331	230	443	45	109	93	80	112	10	85	17
VCR-360	447	483	287	198	165	12	216	202	142	12	424	304	452	94	114	138	98	139	9,5	85	21
VCR-370	447	483	287	198	165	12	216	202	142	12	467	304	452	94	114	138	98	139	9,5	85	21
VCR-280M	360	415	234	152	120	12	170	152	115	10	461	190	427	30	87	93	66	100	M8	72	14
VCR-350M	455	520	265	167	165	12	200	193	140	15	497	230	443	45	109	93	80	112	10	85	17
VCR-360M	447	483	287	198	165	12	216	202	142	12	534	304	452	94	114	138	98	139	9,5	85	21

MODELO <i>MODEL</i>	60 Hz				50 Hz				kg
	VAZÃO MAX. <i>MAX. FLOWRATE</i> (m³/min)	PRESSÃO MAX. <i>MAX. PRESSURE</i> mm H <sub>2</sub> O	dBA	**CV	VAZÃO MAX. <i>MAX. FLOWRATE</i> (m³/min)	PRESSÃO MAX. <i>MAX. PRESSURE</i> mm H <sub>2</sub> O	dBA	**CV	
VCR-100	1,2	36	60	1/6	0,8	25,2	55	1/6	4,9
VCR-200	5	100	78	1/2	4	63	63	1/2	10
VCR-210	8	115	78	1/2	7	76	63	1/6	10
VCR-280	10	200	88	1	8	125	65	1/2	15
VCR-350	13	240	92	2	10	151	77	1	24
VCR-360	18	265	93	2	14	167	78	1	27
VCR-370	27	380	112	4	21	240	99	2	36
VCR-280M	7	210	94	1	5	130	82	3/4	25
VCR-350M	23	700	104	4	18	440	90	2	46
VCR-360M	25	640	102	4	19	400	88	2	46

\*Valores medidos a 1 metro de distância da entrada de ar no ventilador em plena carga \*Shown values measured at 1 meter distance from the air intake of fan operating at full charge \*Valores medidos a 1 metro de alejamiento de la entrada del aire en el ventilador en plena carga - \*\* 1 CV=0,736 kW

## CURVAS DE DESEMPENHO

### PERFORMANCE CURVES - CURVAS DE DESEMPEÑO



Valores nominais indicados conforme norma ISO 5801, válidos dentro de uma tolerância de ± 10% a uma densidade de 1,2kg/m³, 50Hz e 60Hz  
Shown nominal values were raised under the ISO5801 Standard, and were valid within a tolerance of +- 10%, at an air density of 1,2 kg/m³ ; 50 and 60 Hz  
Valores nominales indicados de acuerdo con la norma ISO 5801, válidos dentro de una tolerancia de ± 10% a una densidad de 1,2kg/m³, 50Hz e 60Hz